





Taeka n ibuobuoki ibukin kateimatoan korakoram n tain te maitoro (winter):

1. Tiku n mwengam ngkana ko Aoraki (ti ngkana kona tangira te tia kuakua ke te o n aoraki)
2. Ngkana kona kitana am auti n te tai are ko Aoraki iai ao ko riai n rabuna ibum n te matike (wear mask) ba ko aonga n aki kaewea te Aoraki nakoia tabeman
3. Angin aoraki n tain te maitoro a reke man te virus, are nanona ba ena korakora ana makuri rabwatam n tiringa te man aei. Angan rabwatam ana tai ni makuri. Tiku n mwengam ao motirawa.
4. Teboka baim ao kaitiakia n tainako
5. Karekea itim! E kamanoko te iti man te naan Aoraki aika ewewe ao a buti n tain te maitoro. Kakoaua ba ngkoe ma am utu kam mano man te flu, MMR, Covid (n reitaki ma te naan buutita (booster)), ao itia ataei ana bane n tia n koro
6. Moantai karekei am bwai n Aoraki – ao otani uoua te wiki imwain baneia bwa koaonga n aki tatanninga



THE
CAUSE
COLLECTIVE

 @thecausecollectivenz

 @thecausecollectivenz

Ko Ataia?

Am tia karao bwain aoraki (pharmacist) e kona n ibuobuoki ni kaotaota n bwain aoraki, ke nikarekea buokan te aomata n aoraki aika uarereke



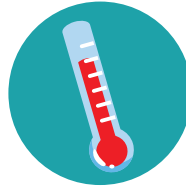
Te bekanako



Te lice



**Uarereke
ranin te
rabwata**



**Maraki ao
biau**



**Aorakin te
mata**



**Te ngongo n
te kun**



Te man



**Aorakin te
kun**

Te maroro ae aki kaboooki ao bwain aoraki ae aki kaboooki ibukia Aoraki ake a katauaki nako iai:

- Maori ke kain te Betebeke
- Ian 14 te ririki, ke kain te utu are kuri n ti tabo aorakina ma tetei ke
- Te aomata are iai ana Community Services Card

**Reitaki ma am tia karao bwain
aoraki (pharmacist) n te bong aei!**