





Lapatakiga mo te Ola mälölö i te Tau Mälülü:

1. Nofo i te fale kafai ko koe e tauale (heiloga ko koe e fano oi kikila te fomai)
2. Fai ho talipupuni mata kafai ko koe e fano ki he mea, ke täofi ai te pepehi atu ki iētahi tino
3. Ko te lahiga o na tauale e maua i te tau mälülü e pēhi gofie, ma e manakomia e to tino ke miha ki te tauale. Nofo i te fale ma mälölö kae ke mafai e to tino oi miha ki na hiama
4. Fakamākeke oi fafano o lima
5. Fai o tui puipua! Ko na tui e puipui ai koe mai na famai pepehi e pipihi i loto o te tau mälülü. Fakamautinoa ko koe ma to kāiga e puipui lelei mai te fulü, MMR, Koviti (fakatahi ai ma tui fakaopoopo), ko na tui puipua foki o tamaiti e tataua ke katoa
6. Tala vave mai au fuälakau – toe ota ni au fuälakau i he lua vaiaho kae ke hē fakatali mataloa koe kafai kua uma au fuälakau



THE
CAUSE
COLLECTIVE

 @thecausecollective

 @thecausecollective

E kē iloa?

Ko tau fale talavai e mafai ke fehoahoani atu ki au fuālakau pe kafai foki e manakomia koe ke fano kikila he fomai i na tauale faigofie.



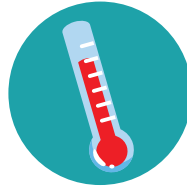
**Tauale
tatā**



Kutu



**Hē lava
te vai e inu**



**Fiva &
Gagahe**



**Famai mata
& fula**



**Kili mageho/
mamago**



Kili mageho



Tauale kili

E mafai ke kikila te fomai e na tauale e maua e ki latou iēnei fakamanuiaga, e **HĒAI** he totogi venā foki na vai ma na fuālakau e **HĒAI** he totogi:

- Māoli pe he Pahefika
- Na tamaiti i lalo o te 14 tauhaga, pe ko he tino o te kāiga e o he tamaiti e tali tutuha na āuga e iā te ki latou: pe
- He tino e iei hana Community Services Card

Fakafehokotaki i te aho nei, te fale e tala mai ai au fuālakau!